

# CVS Modular System



IP 55 (IEC 529)



CERT NO : KLR 0403479



SIRIM  
Certified to: MS IEC 60529: 2005  
Certification No.: LC020801

# MS Model - Modular System



## Model and Dimension

No.	Model	Dimension (mm) H x W x D	Nos. of door	Mounting plate H x W	Plinth-100mmH (or 200mmH)
1	MS206/40	2000 x 600 x 400	1	1884 x 499	PLM64/100
2	MS206/50	2000 x 600 x 500	1	1884 x 499	PLM65/100
3	MS206/60	2000 x 600 x 600	1	1884 x 499	PLM66/100
4	MS206/80	2000 x 600 x 800	1	1884 x 499	PLM86/100
5	MS208/40	2000 x 800 x 400	1	1884 x 699	PLM84/100
6	MS208/50	2000 x 800 x 500	1	1884 x 699	PLM85/100
7	MS208/60	2000 x 800 x 600	1	1884 x 699	PLM86/100
8	MS208/80	2000 x 800 x 800	1	1884 x 699	PLM88/100
9	MS2010/40	2000 x 1000 x 400	2	1884 x 899	PLM104/100
10	MS2010/50	2000 x 1000 x 500	2	1884 x 899	PLM105/100
11	MS2010/60	2000 x 1000 x 600	2	1884 x 899	PLM106/100
12	MS2010/80	2000 x 1000 x 800	2	1884 x 899	PLM108/100
13	MS2012/40	2000 x 1200 x 400	2	1884 x 1099	PLM124/100
14	MS2012/50	2000 x 1200 x 500	2	1884 x 1099	PLM125/100
15	MS2012/60	2000 x 1200 x 600	2	1884 x 1099	PLM126/100
16	MS2012/80	2000 x 1200 x 800	2	1884 x 1099	PLM128/100

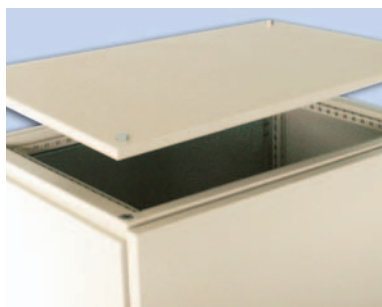
\* 1800mm height on request.

## Specification

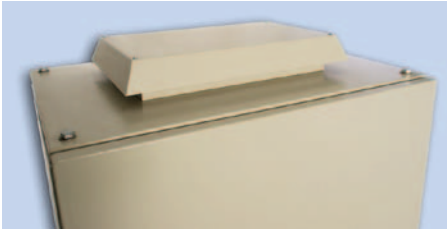
- CVS Modular System (MS) is flexible model as two or more enclosures can be joined together to achieve the required width (length).
- Front door, rear panel (or rear door), bottom gland plate, top and side panel are removable for flexibility.
- A continuous polyurethane gasket seal on door, top, rear and side panel provide maximum IP protection.
- Reinforcement frame on door to increase rigidity and mounting accessories
- Concealed hinges provide 120° door opening.
- Complete with side mounting bar (4 nos.)
- Material:
  - Frame structure and door - 2.0mm mild steel.
  - Top, rear, side panel and bottom gland plate - 1.5mm mild steel.
  - Mounting plate (MP, Rear MP, Inner MP) - 3.0mm galvanised steel.
  - Plinth - 2.0 - 3.0mm mild steel. (epoxy powder coating black colour).
- Locking system: 4-point for single door, 3-point for double door.
- Finish: Polyester powder coating CVS standard beige colour (RAL7032).



## Internal Structure



# Optional Items



Roof Ventilator Unit



Cooling Fan (single or Double) for Roof Ventilator Unit and Light Mounting Bar



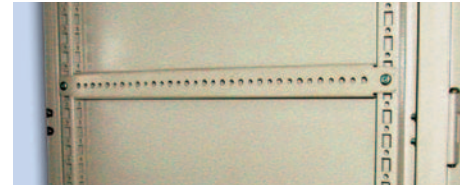
Document Pocket (Metal or Plastic)



Inner Mounting Plate - 100mm width  
(to cover gap between 2 mounting plate)



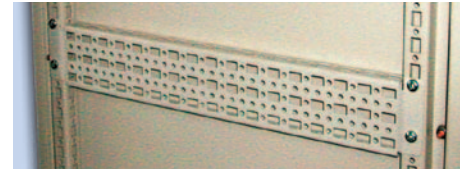
Air Conditioner



Side Mounting Bar



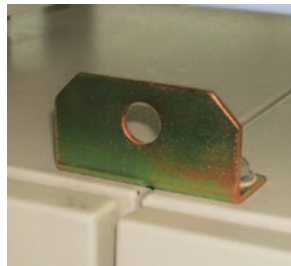
Plinth - 100mm/ 200mm height



Mounting Profile



Eye Bolt



Lifting Bracket



Ventilator Filter Unit



Cooling Fan



Enclosure with Swing Rack



Enclosure with Canopy,  
Inner Door and  
Transparent Door



Enclosure with Fan, Filter, Mounting  
Profile and Roof Ventilation Unit.

# ES Model - A Stand Alone Unit



Enclosure with canopy and rainhood (outdoor)

## Specification

- ES model is a stand alone unit, not for joining purpose.
- Side plates formed the main structure (not removable) which makes the enclosure more solid and maximises rigidity.
- Front door, rear panel, top panel and bottom gland plate are removable. Rear panel can change to rear door with additional rear mounting plate.
- Other internal structure and specification are similar to MS model.
- Material: (standard)
  - Body, door and side plates main structure - 2.0mm mild steel.
  - Top, rear panel and bottom gland plate - 1.5mm mild steel.
  - Mounting plate - 3.0mm galvanised steel.
  - Plinth - 2.0 to 3.0mm mild steel.
- Outdoor: ES model can be used for outdoor when a canopy and rain hood are added. Material may change to electro galvanised steel (EG steel) or stainless steel (SS304) for outdoor purpose.
- Optional item available.

## Model and Dimension

No.	Model	Dimension H x W x D	Nos. of door	Mounting plate H x W	Plinth-100mmH (or 200mmH)
1	ES206/40	2000 x 600 x 400	1	1884 x 499	PLM64/100
2	ES206/50	2000 x 600 x 500	1	1884 x 499	PLM65/100
3	ES206/60	2000 x 600 x 600	1	1884 x 499	PLM66/100
4	ES206/80	2000 x 600 x 800	1	1884 x 499	PLM68/100
5	ES208/40	2000 x 800 x 400	1	1884 x 699	PLM84/100
6	ES208/50	2000 x 800 x 500	1	1884 x 699	PLM85/100
7	ES208/60	2000 x 800 x 600	1	1884 x 699	PLM86/100
8	ES208/80	2000 x 800 x 800	1	1884 x 699	PLM88/100
9	ES210/40	2000 x 1000 x 400	2	1884 x 899	PLM104/100
10	ES210/50	2000 x 1000 x 500	2	1884 x 899	PLM105/100
11	ES210/60	2000 x 1000 x 600	2	1884 x 899	PLM106/100
12	ES210/80	2000 x 1000 x 800	2	1884 x 899	PLM108/100
13	ES212/40	2000 x 1200 x 400	2	1884 x 1099	PLM124/100
14	ES212/50	2000 x 1200 x 500	2	1884 x 1099	PLM125/100
15	ES212/60	2000 x 1200 x 600	2	1884 x 1099	PLM126/100
16	ES212/80	2000 x 1200 x 800	2	1884 x 1099	PLM128/100

\* 1800mm height on request.

Please contact your nearest supplier



Manufacturer:-  
 CVS METAL INDUSTRIES SDN. BHD. (173532A)  
 No. 1, Jalan BK 1/14, Bandar Kinrara,  
 47180, Puchong, Selangor, Malaysia.  
 Tel: 603-8070 5279/1960 Fax: 603-8070 3920  
 Website: [www.cvs.com.my](http://www.cvs.com.my) ;  
[www.cvsenclosure.com](http://www.cvsenclosure.com)  
 E-mail: [office@cvs.com.my](mailto:office@cvs.com.my)



SIRIM  
 Certified to: MS IEC 60529: 2005  
 Certification No.: LC020801

We reserve the right to alter product design and specifications without prior notice.